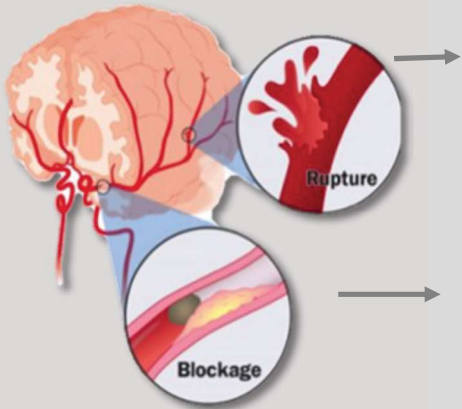




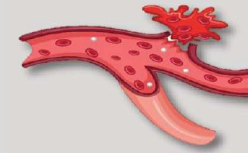
A **stroke** occurs when blood flow to the brain is interrupted by a blocked or burst blood vessel.



## Hemorrhagic Stroke

Bleeding around or into the brain tissue

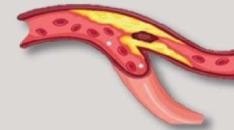
Vessel or aneurysm rupture



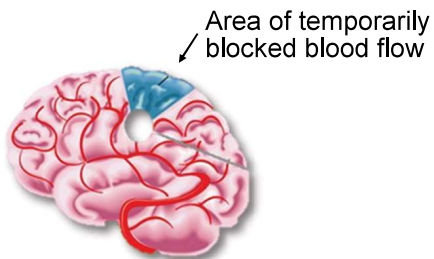
## Ischemic Stroke

Clot Blockage

Thrombotic = clot forms in brain



Embolic = clot travel to brain



## Transient Ischemic Attack

A temporary blockage of blood flow to the brain.  
This is a warning stroke and should be taken seriously.